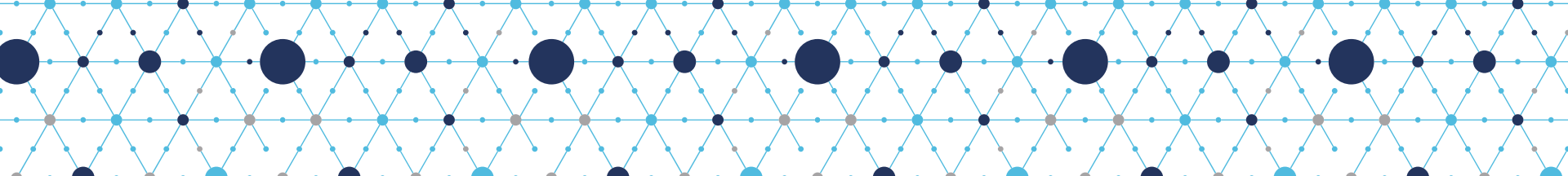


Fiscal Sponsorship Information Session

Laura Ciotti, Fiscal Sponsorship Manager
Heather Allen, Fiscal Sponsorship Consultant



Our Mission

Fuel the effectiveness of nonprofits
with guidance, expertise, and capital.

power your mission
propel
● ● ● ● nonprofits

What is Fiscal Sponsorship?

Fiscal Sponsorship @ Propel

Application Process

Q&A

Fiscal Sponsorship



Accept tax-deductible donations and grants

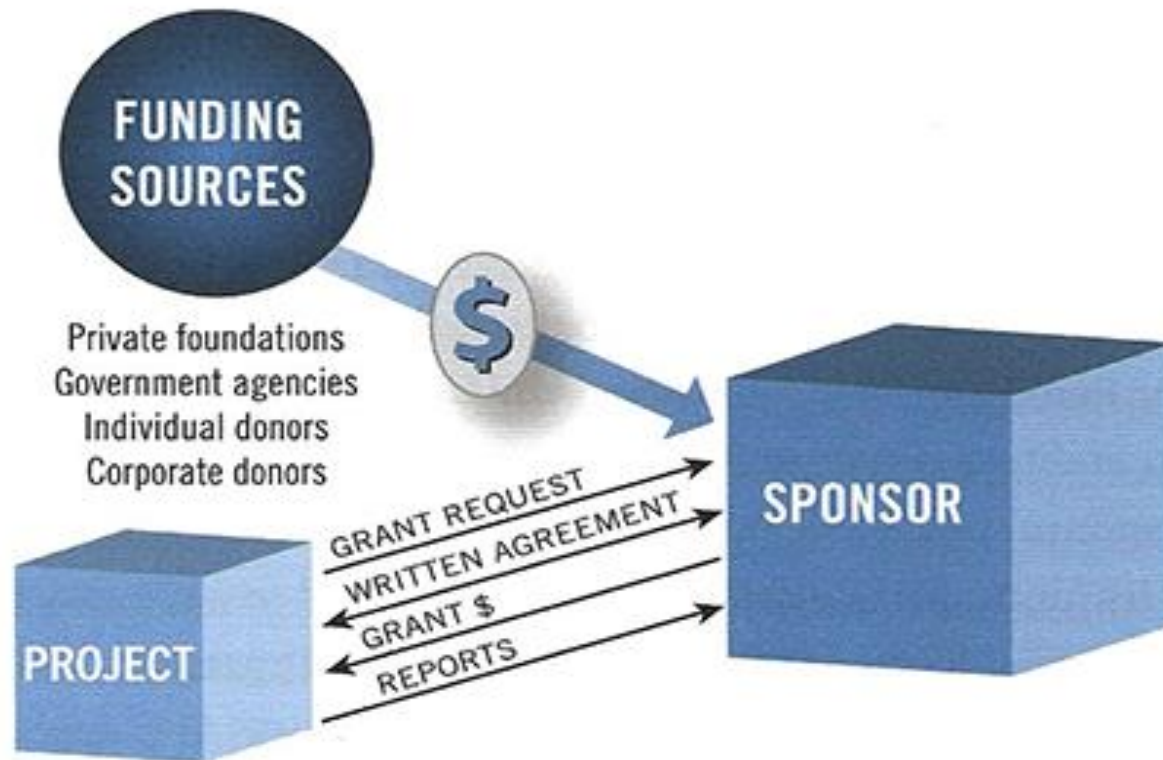
Build capacity and test ideas before launching

Administrative coaching and other support

There are different models

MODEL C

— PREAPPROVED GRANT RELATIONSHIP —



Why Fiscal Sponsorship

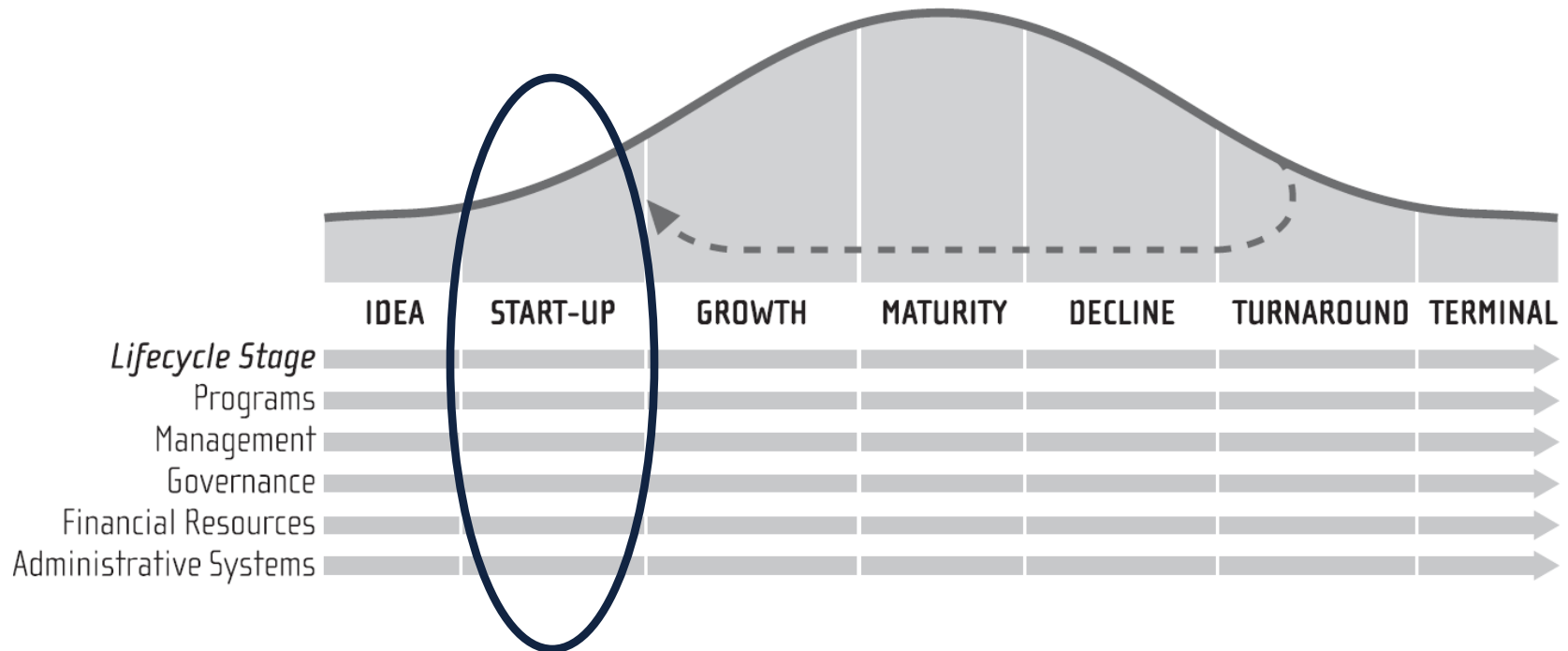


-
- Launch a Nonprofit
 - Grant Support
 - Learn to manage Financial Systems
 - Coaching and Resources for Emerging Organizations
 - Access Workshops and Trainings

Nonprofit Lifecycle



Nonprofit Lifecycle Capacity Placement



Propel Doesn't Offer



Accounting- Groups track and manage their own financial records. Propel can offer guidance, resources and support

Grant writing and prospecting- Groups find opportunities and draft applications. Propel offers coaching and feedback.

501c3 filing- We can refer clients to lawyers or other groups that specialize

Sponsorship for (most) Government Grants

We Don't Sponsor



Groups that already have 501c(3) status

LLC's- private/individual benefit vs. public benefit

Groups conducting activities involving international financial transactions

Work requiring specialized licenses such as mental health care, medical services, personal care, or childcare

Raising funds through charitable gambling

Most government grants- Federal, State and Local

Nonprofits CAN do advocacy, but there are limitations

Our Approach



Partners for Emerging Organizations



You know What You Do Best



Independence, Trust and Accountability

Eligibility Criteria



- Aligned with the Propel Nonprofits mission, vision, and values
- Have programming located in Minnesota, North Dakota, South Dakota, Wisconsin, Iowa, or the Native nations therein
- Have a clear charitable mission
- Willing to incorporate if not incorporated
- Secure an EIN
- Have a plan to achieve financial viability and programmatic success

Other Considerations

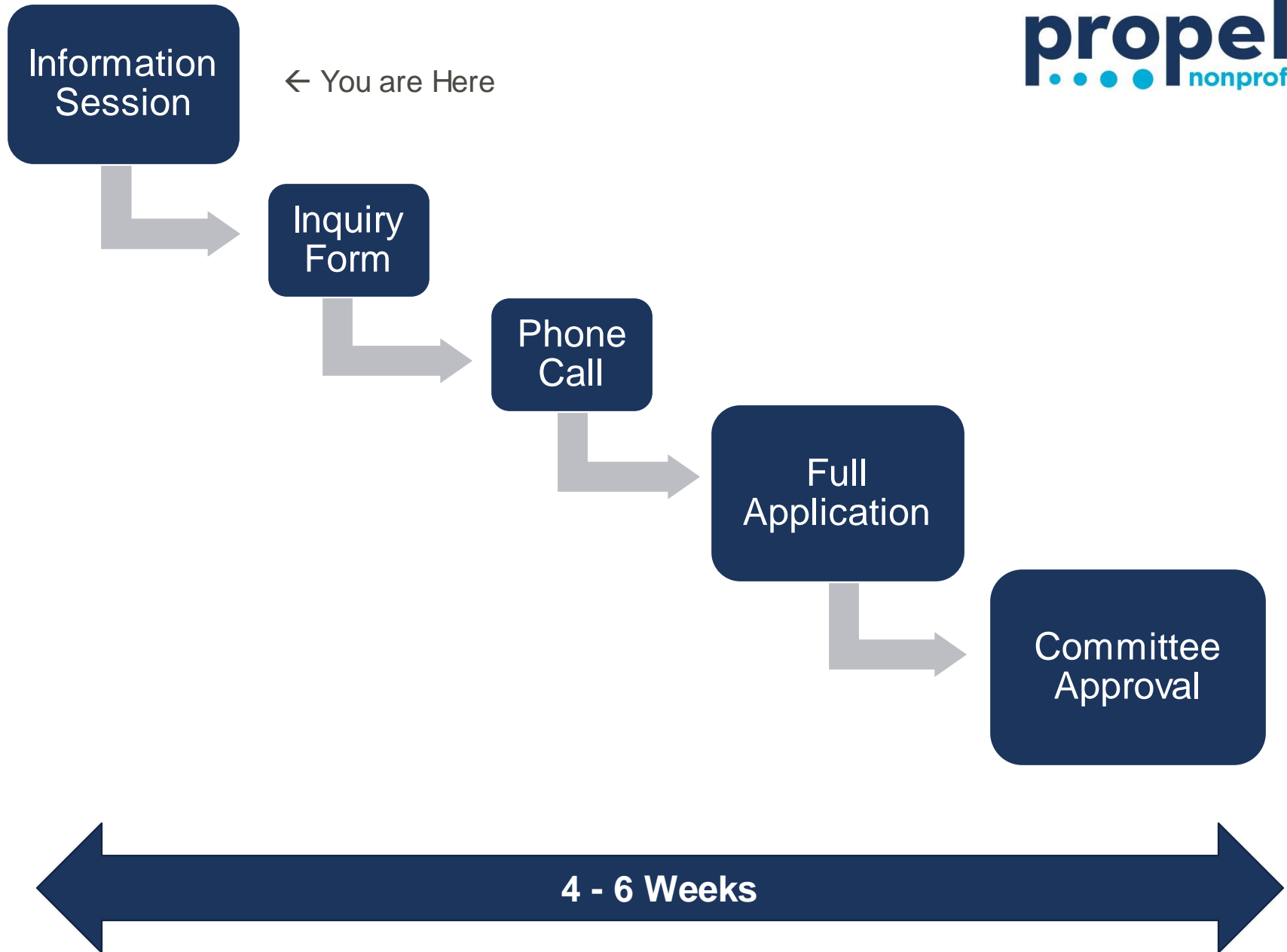


Past the "Idea" Phase

Ready to raise charitable funds
- or soon will be

Capacity to carry out charitable
purpose

Connected and accountable to
your community



Costs



\$300

- Onboarding fee

\$100

- Annual Renewal fee (September)

7%

- Administrative cost on all donations received by Propel

9%

- Administrative cost for Government grant funds

Current Projects



38th Street United »



360 Impact »



Afghan Cultural Society »



The Angela Day School For Liberation and Progressive Education »



Anywaa Community in the Metro Twin Cities »



Bridgemakers »



Diverse Reads »



Eva Sophia Project »



Food for the People »



Foundation for Justice »



Fresh Start Twin Cities »



Frogtown Green »



Global Shapers Minneapolis Hub »



HITP Hoops »



Hmong Early Childhood Coalition »



Juvenile Sentencing Reform Minnesota »





Questions?



- Fiscal Sponsorship National Directory
<https://www.fiscalsponsors.org/>
- Minnesota Council of Nonprofits
<https://www.minnesotanonprofits.org/>
- Fiscal Sponsorship: 6 Ways to Do it Right
Gregory L. Colvin and Stephanie L. Petit

For More Information



Propel Fiscal Sponsorship

<https://propelnonprofits.org/fiscal-sponsorship/>

Email: FS@propelnonprofits.org

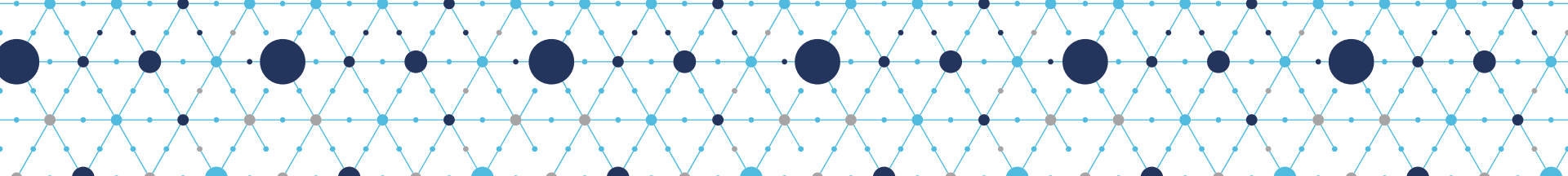
Propel Team Contacts

Laura Ciotti, Senior Fiscal Sponsorship Program Manager

lcotti@propelnonprofits.org 612-249-6748

Heather Allen, Fiscal Sponsorship Consultant

hallen@propelnonprofits.org 612-249-6682



Thank You!